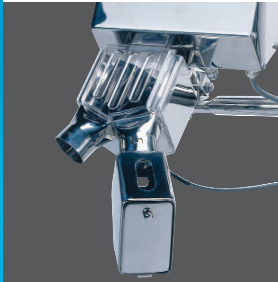


# Tablex

## Tablet and Capsule Inspection



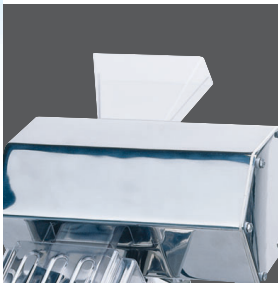
### Reject Mechanism

Safeline's diverter style reject is able to handle large volumes of tablets without danger of blockage or tablet damage.



### User friendly interface

The washdown rated (NEMA 4) control panel is easily understood and is designed to simplify operations.



### Compact Design

The crucial inlet to outlet dimension has been reduced to 479mm (20") to minimize the fall height of the product.

### Product inspection for pharmaceutical products.

Ultimate sensitivity for maximum protection of pharmaceutical products is guaranteed with Safeline tablet and capsule inspection systems.

The Safeline Tablex zeros in on metal contamination from broken screens, sieves, worn punches, dies or raw materials and removes the contaminated tablets and capsules.

Offering great flexibility, this detector utilizes Safeline's unique Triple Axis detection head that features 'no-tool' adjustment to fit any press output configuration. An extremely small footprint minimizes space requirements and the stainless steel mirror finish is designed to exceed strict FDA sanitation requirements. Contaminant is rejected into a separate bin for analysis and disposal.

- **Auto Balance and Crystal Frequency Control**
- **Touch Panel Key Pad**
- **Fail-Safe Reject**

#### **Ultimate Sensitivity and Security**

Tablex has been proven to detect minute particles of ferrous, non-ferrous metal, all grades of non-magnetic stainless steel and fine screen wire in a variety of metal types. Safeline's advanced coil design and sophisticated digital signal electronics provide optimum sensitivity and stability, resulting in metal detectors unrivaled by any other model. Operating security is ensured with the self check capability that continuously monitors sensitivity and sounds an alarm if a failure occurs. A separate reject confirmation system monitors the effectiveness of the reject device and will activate an alarm if metal is detected and the reject fails to respond within a preset time.

#### **Reject Mechanism Designed to Minimize Product Loss**

The entire diverter mechanism is built from mirror polished stainless steel and incorporates a high speed, bi-stable electrical solenoid that ensures immediate diverter action upon detection of contaminant. On detection of metal, the reject mechanism diverts a minimal amount of product to the reject chute. Safeline's diverter style reject is able to handle large volumes of tablets without danger of blockage or tablet damage.

#### **Compact Design Requires Less Space**

The complete assembly is designed to make the most efficient use of valuable space around the tablet press. The crucial inlet to outlet dimension has been reduced to 479mm (20") to minimize the fall height of the product. 'No tool' adjustment of the inlet height, slide angle and left or right hand feed makes this detector easy to set up with any tablet press. The low center of gravity designed with locking casters ensures full mobility without the risk of tipping.

#### **Performance Validation in Accordance with FDA Requirements**

The Pharma GF Performance Validation Routine is designed to comply with FDA requirements. It allows users to confirm that the metal detector is tested by qualified personnel with documented test standards at agreed time intervals. A printer can provide a confirmation report that testing has been correctly completed.

#### **Powder & Granule Detector**

For ensuring product integrity of bulk pharmaceutical powders and granules, the Pharma GF gravity fall detector is available. Request a copy of our Pharma GF brochure for a more detailed description.

#### **Additional Information**

Request Safeline's free booklet:  
The Guide to Pharmaceutical Metal Detection and Validation Protocol.

#### **Specifications**

Model: Tablex  
Chute Dimensions: A selection of aperture sizes are available, to match your product.  
Throughput Rate: Up to 10,000 tablets/minute  
Supply: 115v / single phase / 50/60 Hz

